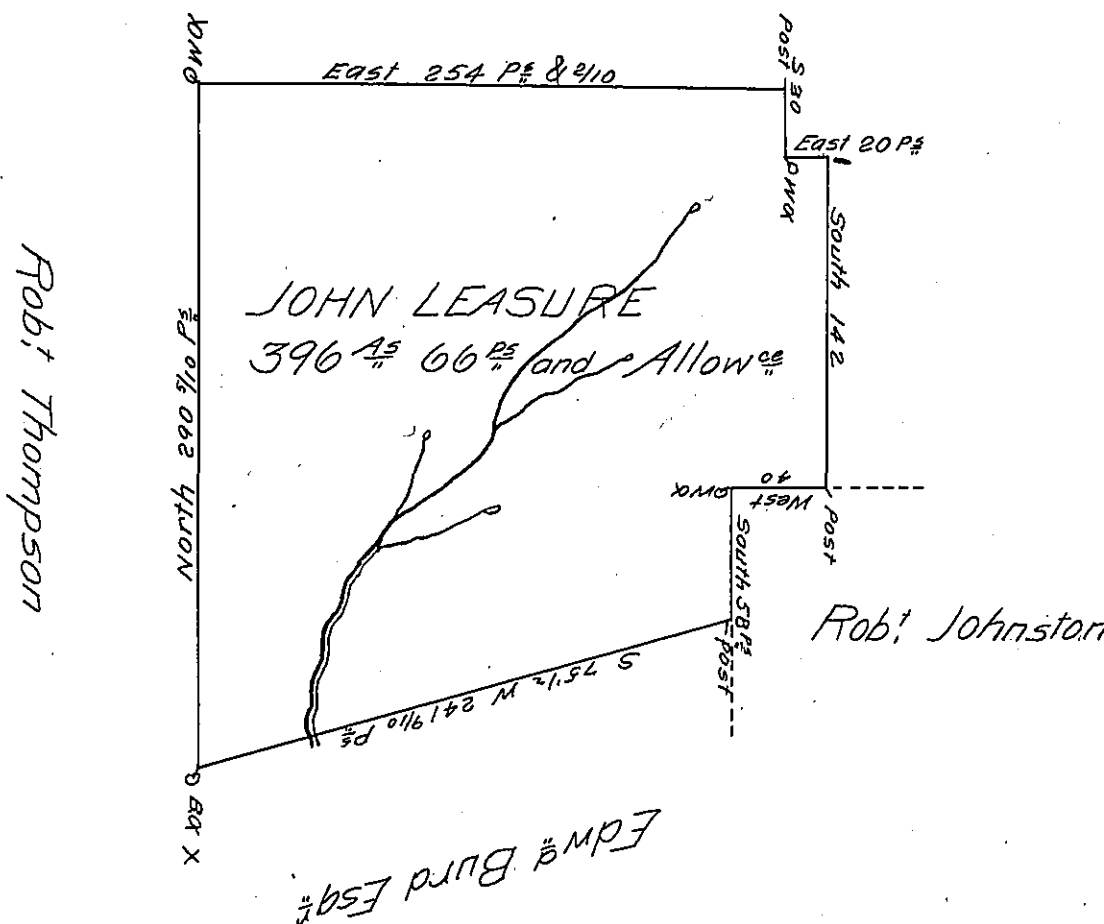


H. Leroy & J. Linklane



Surveyed for John Leasure July 12th 1803 the above described tract of land containing three hundred & ninety six Acres and sixty perches of Land and usual Allowance of six P.Ct. for Roads &c. situate in Lycoming County on a branch of Plumb Creek. In pursuance of a Warrant dated the 15th of January 1802

To Samuel Cochran Esq.
Surveyor Genl.

James Johnston D.S.

IN TESTIMONY that the above is a copy of the original remaining on file in the Department of Internal Affairs of Pennsylvania, made conformably to an Act of Assembly approved the 16th day of February, 1833, I have hereunto set my Hand and caused the Seal of said Department to be affixed at Harrisburg, this twentysecond day of September 1905

Isaac R. ...
Secretary of Internal Affairs.